



BRICKBATS

The Magazine for
Volunteers and
Members of The
Brickworks Museum

Free to volunteers and members, £2.50 when sold

www.thebrickworksmuseum.org

Introduction

As The Brickworks Museum open season progresses through summer fun to Christmas festivities, here is a review of 2025 so far and what is yet to come. The Kings Award for Voluntary Service was a high point of the year for many volunteers, while repair of the last two derelict drying sheds represented an important milestone for the museum, staff, and Trust.

Everything is more positive now the listed buildings are secure, visitor numbers are improving, exciting new displays are under development and a series of smaller events are happening. We look forward to a positive future for the museum and hope that you will continue to share this journey with us.

Pam reports on all the events in 2025, with some of the best yet to come! Jim concludes the life of Samuel Batley and Richard explores the Hamble Valley brickyards. Carlyne reports on the Southern Ceramics Group and there are reports from the Trust, conservation, and archives. Brickyard Café increased open days.

Inside drying sheds 1 (left) and 2 (right)



Judy Bevis, Editor

©

Brickworks News

- The Brickworks Museum opened to visitors in early March this year, so the time for essential maintenance and cleaning was short.
- April was eventful, with the KAVS presentation on 10th April. A lovely event that celebrated the achievements of the many volunteers at the museum. Paul Holmes, the Hamble Valley MP, could not attend the presentation, so visited the museum on 17th April. Easter was very busy with events for children and so was half term.
- The April Steam Up attracted over 700 people to the museum, bringing visitor numbers back to pre-pandemic levels.
- The Beer Festival tickets sold rapidly and the event was a great success, once again!



- A very generous donation means that the Downton Brickworks building is under construction. Ed and Bob have moved from laying a brick path and garden construction to working on this building project.
- The Wood Recycling Project ceased trading, leaving the wood in the museum car park, so Ken spent hours with the forklift relocating timber across the site in time for the April Steam Up.
- A new volunteer, Fred, has started to assess the excavators. As museum objects, these require a full assessment and detailed plan before any work can start. The excavators will eventually form part of the outside exhibition area for 'winning the clay'.
- Aerial ropeway structures have been relocated alongside the main drive pending conservation and display.

- To support local biodiversity, wild flowers are encouraged across the site.
- Summer Trail this year is all about the Tudors.



Events News

The main events for 2025 have gone well so far this year with mixed weather but everyone had a good time.

Spring Market 9th March – Sunny and dry with 250 people on site and a variety of Craft & Gift stalls and the Brickworks Thomas layout also Children's Activities while outside were the Mini Car Club, a Ukulele Band, two buses visited by 87 people) and one of the miniature trains gave rides.

Spring Steam Up 27th April - was a great event with 580 people and thanks to the Steam Group the yard was full of Traction Engines, Military and other Vehicles and the large woodcutting saw. The popular Traction Engine and Trailer Rides were on all day. Also, outside were Miniature Train Rides and the Blacksmith. Inside Craft & Gift stalls, Local History Information, and a display by Locks Heath Photography Group.

Back in Time (Steampunk & Victoriana) 25th May – 273 people came and quite a lot were dressed up in interesting or unusual costumes, including the Victorian Strollers. Outside were two Traction Engines and Tractor and Trailer rides all day. A 100-year-old 'Toastrack' bus also gave rides around the site. A large 16mm model railway layout filled one of the marquees. Classic cars, vans and motorbikes, and a Double Decker bus filled the courtyard. Inside were Steampunk and other stalls, a large display of WW2 items, Spinning & Lacemakers.

Trains at the Brickworks 29th June - had over 300 people with lots to see and do outside including miniature train rides and a static display on the mineral line. Buses, Military Vehicles, and two Traction Engines. Two live music sessions. Inside, the Brickworks Thomas layout and five other model railway layouts, some large, including a Meccano one, also train themed models, a Local History display of pictures in the area and several stalls.



Midsummer Magic 20th July – after a wet start, 170 people came to see Magicians, Flea Circus, Spinning & Braiding, Ruby Tarot, and stalls of Fairies & Dragons, Dolls & Dinosaurs, Children's Comics and Hampshire Tortoise Rescue. With tractor-and-trailer and train rides all day, and the blacksmith making snails, it was an event especially appreciated by children. Feedback: 'my daughter had such a special afternoon, wanted to thank everyone involved – such a welcoming event' and 'Superb event, children especially had the time of their lives, lots of smiles, laughs and excitement. Such a pity other people missed out'.

Smaller events: Easter Event on 6th April was very well supported. It included a Petting Farm with cute animals. There were children's activities. World Ocean Day & Nature Theme on 8th June – several craft activities and Hedgehog and Bat Groups.

The Beer Festival on 17th May sold out tickets in a few hours and everyone had a lovely time as usual.

Still to come:

Wheels at the Brickworks 10th August – Mixed Vehicles & Meccano Club. Also, Uke's of Wallington.

Brickworks Dog Show 31st August - Fun Dog Show & Doggie Activities.

Harvest Home 21st September - Displays on Churches in the area, War Memorials, Spinning & Weaving, Corn Dollies, Beekeeping, Lacemaking & Mixed Stalls. Melody Makers Choir, Tractor & Trailer Rides. Buses. Miniature Train Rides.

Autumn Steam Up & Halloween 26th October - Traction Engines & Trailer Rides, Lots of other Vehicles, Halloween Displays & Stalls. Also, Train Rides.

Christmas Festival 23rd November - Christmas Displays, Christmas Market, Music, Meccano Group and Train Rides.

Children's Christmas Special 7th December.

We are very grateful to all the volunteers that help before, on the day and in clearing up after, or we could not hold the events.

Pam Formby, Volunteer Brickworks Events Organiser

News from the Trust

As editor of Brickbats, I attended the Bursledon Brickworks Museum Trust Annual General Meeting on Tuesday 17th June. All museum volunteers and other stakeholders were invited to attend. Eight trustees were present, with another attending via internet, apologies had been received from those not attending.

For the benefit of guests attending for the first time, the Trustees introduced themselves before the officers delivered their reports.

Andy Elford, Trust Chair, reported on an eventful 2024, that included the IWM art project 'Locusts' and the land sale. The former project has extended into 2025 with a new film that features more local experiences. The land sale made it possible to reroof sheds one and two, although it has meant volunteers and visitors must negotiate a building site when coming to the museum. The houses should be completed by October.

The Trust is working with an estate agent to find a tenant for the drying sheds that are now stabilised and reroofed. The Trust is developing a better working relationship with the museum site owners, HBPT, and is negotiating an extension to the original lease. Unfortunately, Southampton Wood Recycling Project ceased trading, leaving the timber on site. What is not suitable for use in museum projects will be sold off to raise funds for the museum.

Three Trustees left the Trust, Penny Cameron-Watt (Education Trustee), John Sullivan (Health and Safety Trustee) and John Bevis (trustee without portfolio). The Trust Chair would love to hear from any volunteers interested in becoming a Trustee, and will gladly provide information about the roles.

To conclude, Andy mentioned the vacancy for a paid Volunteer Coordinator and that Marketing is being undertaken by Jodie, who runs the café and organises weddings at the museum. Finally, he noted that visitor numbers are recovering at last.

Keith Aldis, Trust Secretary, stated that the Officers Reports would be available on the notice board for all to read after the meeting. He also said that the Trust records are available online and in paper form at the museum.

Keith praised the museum volunteers that earned the KAVS award and thanked all volunteers for their work for the museum. He noted that three Trustees were to stand down this year after a term of three years. He also urged any volunteers interested in joining the Trust to get in touch. He said that the role of Trust Secretary should rotate, but he was willing to continue if nobody wanted to take on the role for 2025/6.

Treasurer's report from Paul West started with the news that 2024 had been financially better than 2023, but the museum was still making a loss. The Trust was taking positive action to turn this around and hoped that

in 2025 finances would break even, although projections indicated a small loss. Overheads in 2024 decreased by £8,000 due to reductions in staff costs, insurance, and operational savings but energy costs increased by £2,000. The Front of House team focused on obtaining Gift Aid on tickets and donations, achieving extra income of £7,000! Other income included the last £45,000 of the HCC grant for the kiln roof project, £3,000 for a nature project and £13,000 for the Downton building project.

Paul concluded that continued financial recovery is expected in 2025, aiming to break even. The completion of the New Foundations project to provide rental income and other new income sources should generate a modest profit to spend on the museum.

Q&A: Will the new roof have solar panels? Although solar panels were in the original project plan, rising costs required the plans to be focused on securing the fabric of the listed buildings.

The minutes of the 2024 AGM were approved, the final accounts for 2024 were not quite ready for this meeting so will require a special board meeting, Keith Aldis, Eleanor Bell (HBPT rep on BBMT) and Adrian Upton were all reappointed to another 3-year term as trustees. Andy Elford, Keith Aldis and Paul West were nominated and seconded for another year as Chair, Secretary and Treasurer respectively. No Trustee volunteered to become Vic-Chair, so the Office is still vacant.

After nine years, Rothman's need to be replaced as auditors, so the Trust is seeking to find a volunteer auditor, otherwise Paul will look for another commercial company.

Before closing the meeting, Andy thanked John Bevis for his work with the Trust, Keith praised the dedication and commitment of all the museum volunteers and the staff were thanked for their hard work. Richard Newman thanked the volunteer Trustees 'for keeping the ship afloat'.

Next BBMT AGM: 16th June 2026, 10.30 at The Brickworks Museum.

Report by Judy Bevis, Editor.

Museum Volunteer Profile

When I asked Keith about his work at the museum, his responses included lots of jokes and diversions, as he was very a reluctant interviewee! However, I managed to establish that he originally volunteered for an administrative role at the museum, but has gradually become involved with other things.

Keith retired from the Civil Service after a varied career that included Benefits, Estate Management and Health and Safety. After retirement, he visited The Brickworks Museum on a Heritage Day and asked about volunteering.

Keith started working with the Volunteer Coordinator to organise and manage the volunteers' records. He is responsible for requesting references, keeping Health and Safety records and training records for more than 80 volunteers. Keith administers the Family Tickets system. He collates the timesheets for volunteering (vital information for many grant applications).

Later, Keith took on the administration of the museum's membership scheme for approximately 100 members. This includes the distribution of 'Brickbats' twice a year.

It is fortunate that much of the administrative work can be done anywhere in the museum, because Keith has also become an important member of the Front of House team, working mainly with Paul, Terry, and Chris at Reception. Will you identify Keith on your next visit? Stock Taking for the shop is done when the museum is closed in winter.

Keith became quite serious when I asked what he enjoys about volunteering at the museum. He mentioned the variety of the work, the friendly people he works with and that he enjoys chatting to the visitors as well as other volunteers.

Away from the museum, Keith is also a volunteer church organist, much in demand for carol services. Unfortunately, he does not give recitals as he prefers the music to be the focus of attention.

Judy Bevis, editor

Southern Ceramic Group at The Brickworks

On Sunday 15th June we opened our doors to the Southern Ceramic Group (SCG) to help them celebrate their 50th anniversary. The group is a social organisation that brings together ceramicists helping them to pursue their passion for creating with clay. It was started in 1975 by a small group of enthusiastic potters. The aim was to enable potters and sculptors who usually work alone to meet and share ideas with each other. The idea worked so well that they now have over 200 members.

For their 50th anniversary they took over our events spaces and created an installation in Shed 5 called 'Suspended in Time'. There were talks in the morning and afternoon given by Mella Shaw and Cadi F, and demonstrations throughout the day. The demonstrations ranged from encaustic tile making to creating intricate 'lichens' out of clay. There was also an opportunity for visitors to create a sculpture based on clenching clay in your hands.

The installation was generated by a call out to the SCG members to create an artwork based on the idea of something being suspended both in time and in space. Fifteen artists responded each with a very individual and interesting interpretation of the theme. There was a competitive element to the installation with first prize awarded to 'Dandelion Dispersal' by Francheska Pattison. Francheska had chosen dandelion seeds floating in the wind. It was very beautiful and delicate and looked amazing against the rather rough factory backdrop. The judges said how difficult it had been to choose the winner, but this work was considered to be the best both in its artistic interpretation and because of the technical difficulties that had had to be overcome.



Carolyne Haynes

Member's question answered

The object featured in the March issue of Brickbats is a crimper for barrels, thanks to Alan Morgan for providing this information. So why was this object found at a derelict brickworks? Was it dumped at the site, were barrels crimped at the brickworks or was the crimper used for some completely different operation? What it does show is that investigating old brickworks requires a lot of further research to provide positive identification of objects that are really related to the site.

A frog he would a-woeing go?

Those who know bricks, are aware of the frog that is in them. There can also be frogs in the brickworks.

Claire and I came down the steps by the bungalow and crossed over the soak away. In the sunlight we were able to see movement of the water in the soak away. On closer inspection it was revealed that the cause of the movement was a frog in the brickworks drain.

Not realising that the grill was hinged, Mary was informed, and Brian came with a sieve, they removed not one but two frogs from the soak away. Mary thought that one may have been male and the other female. They were carefully removed in a jug of water to the pond in the wildlife garden.

Let us hope they live long and happy lives in their new home, in the wildlife garden.

Richard Newman, Volunteer Utilities Manager



Editor's note: Richard provided a photo of some Bricks made in India that had BBC in the frog, but it got lost in transit, so I have included this genuine BBCo brick that was definitely made at Bursledon Brickworks! No photos of genuine living frogs available, so maybe they were camera shy like the museum volunteer profiled in this issue.

The Brickworks Museum in the press

The Feb/March 2025 issue of 'Winchester Resident' Magazine included a lovely article about The Brickworks Museum and the volunteers. It included photos of the trains team and the workshop team, mentioned the Kings Award for Voluntary Service and developments at the museum.

On 16th June 2025, the Southern Daily Echo included a report titled 'New homes to help preserve local heritage'. A photo of the inside of sheds 1 and 2, along with representatives of the museum, Imperial Homes and Vivid, was included. The partnership will produce 12 new, affordable homes at the Swanwick Lane end of the museum site and made it possible to repair and preserve drying sheds 1 and 2.

New projects at The Brickworks

Several new exhibitions have been created for The Brickworks Museum this year. Walking through the museum, you will come to the first at the entrance to Drying Shed 4, next to the Managers Office. A collection of **postage stamps depicting brickmaking and building industries** are on display with detailed explanations. The stamps were donated to the museum by Nick Basden, and the research was undertaken by Daniel over last winter. (Daniel is the youngest permanent member of the volunteer archives team.)

From mid-July, the film **'Rebuilding Southampton after World War 2'** is running in Drying Shed 5, replacing the Southern Ceramics Group temporary exhibition (see Carolyne's report on page 6). This Imperial War Museum supported project features still images of bombed homes, temporary housing and rebuilding. All accompanied by oral testimonies of local people that experienced it at first hand.

In the upstairs gallery **'Brick buildings in the local area from the Romans to today'** has been relocated elsewhere in the gallery to make way for a display of photographs by Will Pryce. The original photographs were taken for the book, **'Brick, a world history'** by James Campbell, then used at the book launch hosted by Brick Development Association (BDA). The photographs featured at the book launch were donated to The Brickworks Museum by BDA last winter, and now provide a lovely new exhibition in the upstairs gallery. Coincidentally, I had already chosen **'Brick, a world history'** for my next book review, so I recognised the pictures as they emerged from their wrappings!

Now for all the developments in the outside display areas! The **Downton Brickworks Collection** will be housed in one of the existing small buildings, plus an extension that is under construction. Bob informed me recently that they have started construction of the back wall. Bob also mentioned that Neil and Malcolm have been working on this project too. The objects in this collection have already been conserved or repaired by the workshop team ready for display.

Narrow gauge Railway display, worked on by the combined teams of railway volunteers and workshop engineers for 200 anniversary of railways, is taking shape. Follow developnets to the final display.

A **Memorial Garden** is under construction next to the courtyard. This is intended to be a place for remembering the incredible service of long-serving museum volunteers over the last 20 plus years. In keeping with the location, the name of each volunteer will be on a brick.

At long last, the excavators have been adopted by an enthusiastic new volunteer. Fred has previous history of working on these machines, so knows his way around them and is up for the challenge. See how this project develops each time you visit the museum.

It is now possible to view the Scotch Kiln, as a path has been made in the area once used by the miniature railway. Talking of railways, a new exhibition of narrow gauge railway objects is under development, but that belongs to another report in this issue.

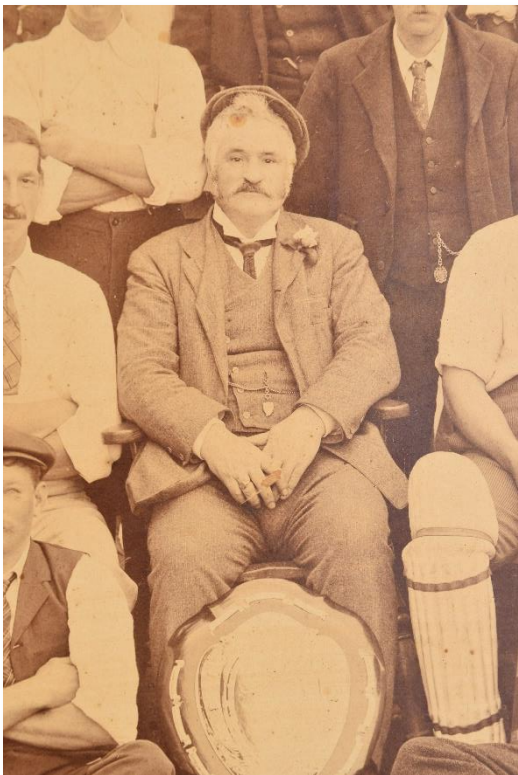


Scotch Kiln, designed by Martin Hammond, (left) and the Memorial Garden taking shape right).

THE PERSONAL LIFE OF SAMUEL BATLEY *(continued)*

We now come to the 30th of August 1902, and the newly built Methodist Chapel in Chandlers Ford is the setting for the farewell party in honour of Samuel and his family. Local people are sad to see him leave, although many of the workforce from the brickworks have either moved to Swanwick, or will shortly join Samuel.

Samuel moved into an even larger house, in Green Lane, Lower Swanwick, just a short walk from the new brickworks. The fine Edwardian House stood in an acre plot and was surrounded by fields, which sloped down to the River Hamble. Strangely, this house was named *Hamble Cottage*, despite the fact that it was large, and not what most people would think of as a cottage. On one side the words, *Hamble Cot 1902*, have been chiselled into the brickwork, and the letters filled with mortar. I wonder what the story is behind this unusual sign, which does not appear to have been done by a professional stone mason. Why the word *Cot* would be used instead of *Cottage* is a mystery. Was this joke? It is thought the house was built for Batley by the brickworks owners, showing in what high esteem they held the man. Did he tell them that he only needed a cottage?



Elizabeth's aged sister came to live with them at Swanwick, but apart from that life carried on normally, with Samuel working hard on the extension to the original works being built to the north, his local government duties, and supporting local non conformist chapels in Swanwick and Sarisbury. His recreation was likely to be tending his garden, when he had time, although he also spent much time with the brickyard workers, attending football and cricket matches, and other entertainments. He was very popular among the men he managed, which is understandable, considering his early experiences, working on the shop floor; a rare talent, perhaps, someone who bridged the divide between the workforce and the owners.

Samuel Batley in 1908 as president of the Lower Swanwick Brickworks Cricket Club. A year later he would no longer be alive. (Image: courtesy of The Bursledon Brickworks Museum Trust)

We know that in the winter of 1908/9 Batley was overseeing the building of a new drying shed, for what was now called, The Bursledon Brick Company. Before the work was completed he fell ill, and died suddenly, on the 18th of March 1909. He was just 57 years old. His wife followed him a few days later and the other member of the household, Elizabeth's sister, died soon after.

His obituary and the report of his funeral occupied several column inches in the Hampshire Advertiser. In the words of the newspaper report, *A funeral of so imposing character is seldom seen in the locality.* The funeral procession was accompanied by a large number of friends and associates as it made its way to Sarisbury Green cemetery, next to St. Pauls Church, where his grave and headstone can still be seen. Present were, Samuel's son and other relatives, Herbert and Claude Ashby, directors of the BBC, Edmund Ashby, numerous non-conformist church clergy from Eastleigh and Fareham districts, large numbers of workers from the brickworks, friends and town councillors from Chandlers Ford, Eastleigh, Fareham and Southampton. In all, it sounds quite a major event.

So, what was Samuel Batley's legacy? At the beginning of this article I offered my opinion that we may not have the museum today, had it not been for him. I based this on evidence that suggested he was an expert at his job, and that members of the Ashby family, while being excellent business people, were not expert brickmakers. What we see, in the museum today, is very much Batley's plan. The choice of machinery, drying sheds and kilns, were almost certainly his ideas. Batley was lucky, because he met in the Ashbys, wealthy entrepreneurs, willing to take risks, and most importantly, prepared totally to trust the man they had employed to deliver the new works in Chandlers Ford. After Batley's death the brickworks was not further developed, other than by adding a fourth kiln and aerial ropeway. Batley's original plan remained good, for 77 years.

Acknowledgements. Thanks to Pam Formby and Ann Ailes for help in locating the house in Lower Swanwick where Batley spent the last years of his life.

Jim Beckett, December 2024.

BRICKWORKS AROUND THE HAMBLE VALLEY

Having some time on my hands during my enforced inactivity in July and August I decided to undertake some research. The first was Fareham Reds and I found several brickworks sites I never knew existed in Fareham.

It was no surprise then that when I turned my attentions to the Hamble Valley that something similar occurred.

To have some order in the paper I started on the south west corner of the Hamble River at Netley. The Victoria Hospital had its own Brickworks, and when the building was finished it was the longest in the world at the time. The Brickworks appears to have been behind the Plough in Portsmouth Road, Old Netley.

According to 1813 Tithe Records, Richard Hickley had "his own lands" At Hound and there are maps annotated "brick field" shown in Hound Grove. Charles Warner worked land belonging to John Clarke in Pilands Copse. There were Upper and Lower Clay Pits in Lowford, with Hoe Moor being situated in what is now the River Hamble Country Park. Hoe Moor ran from at least 3rd June 1796 to 1908 shortly after the brickworks at Lower Swanwick opened.

In Hedge End Dacre's Brickworks were founded in 1901. Also listed in the Clayworkers record of 1901 was a Joseph Smart.

When preparing a talk for the Hound History Society I discovered further works as follows: - William Cole Butlocks Heath, Hound. Dyer & Sons Brickworks, Sheepwash. George Hodder, Hound, in the census record for 1881 there is mention of Mr. Hodder's Brickyard in School Road, Hound as a place where people lived. Harding & Ewer

Hound. Hooper & Co were listed as having Brickworks at Chandlers Ford, Providence Hill, and Lower Swanwick. I wonder where in Providence Hill?

Roman tiles have been found to the south of Fairthorne Manor and 'Roman kiln and fragments of pottery' at Hallcourt Wood near Biddenfield.

At the source of the Hamble there was Blanchards in Bishops Waltham along with Coppice Hill. The latter being associated with works, not in the valley but nearby in Swanmore. In Durley there was Charlie Churcher.

Coming down the east side of the Hamble the next works was Bursledon Brickworks founded as Hooper & Ashby in 1897. The workmen discovered a pot in the clay which contained Bronze age loom weights. Later excavation revealed some Roman pots which appeared to have been ritually "killed" by having holes deliberately punched through them.

Continuing south in Osland Lane was Oslands Brickworks which operated between at least 1841 and 1908. In an 1805-45 map the word 'Brickland' is written across from Swanwick Shore Road, across the A27 to the area where Oslands was situated.

Between Holly Hill House (Sarisbury Court) and the Hamble there is an area called Downkiln Copse shown on an 1888-1913 map. In 'The River Hamble' by David Chun there is a map of the Hamble, compiled by Lieutenant Mackenzie in 1783, showing the words Down and Brick Kiln.

At Warsash just off Newtown Road was the Warsash Chemical Works where Messrs Hooper & Ashby made Portland Cement. The works were started in 1864 and closed in 1882. An advert appeared in a newspaper based in London about 1892 'to let or lease Warsash Cement Works'. In the occupation of Messrs Hooper, Ashby & Buchanan.

Finally at the tip of the Warsash peninsula just below Hook House the site of an ancient kiln was found in 1930 containing Saggars, props & lattice pottery.

Richard Newman

Note from editor: Joseph Smart was reported in a local history of Hedge End to be making bricks in Foord Road, quite close to the Dacre's Brickworks in Heath House Lane

Archives News

The archives team continue to make steady progress, with the cataloguing of books in the Martin Hammond Archive now completed. The estate of Barry Fairweather has generously donated many of his books to the museum, along with his museum focused papers. These will add to the understanding of the more recent history of The Brickworks Museum. The books that are not relevant to the museum collection can be sold to benefit the museum.

Amy, a university student, volunteering with us for the summer, has started to organise and conserve the Downton Brickworks photographs. This work will inform the interpretation of the Downton Brickworks exhibit in the new building being constructed by Bob and Ed.

Recently, the Edwin Course/Pam Moore Heritage Library has been visited by mice. Droppings only, fortunately no evidence of damage to the collection. This provided a health and safety risk to volunteers working in the area, so guidance notes have been provided for personal safety.

New ground has been broken by Jim, with the first MODES entries for one of the individual archive collections.

Recent donations to the museum included many old issues of Brickbats and HBPT annual reports, so it will be possible to create a collection for general use. This will provide new volunteers with very good background information about the development of the present museum.

The next challenge is recording and conserving the photograph collection. Some work has been done on this already by two previous summer volunteers, so it will not be breaking new ground.

While Nigel and Ann work on recording the big collections of bricks that have been donated to the museum, Ursula has joined the team and is working on the smaller donations. The Brick Archive Group has also been joined by a student, Kiran, this summer. He has been recording yet another part of the brick collection.

A heartfelt thank you to all archives team members for being so committed to caring for, organising, and recording the collections at the museum.

Judy Bevis, Volunteer Librarian and Archivist

Book Review

This time I want to mention two books. The first is 'Creative Brickwork' by Terry Knight, on behalf of the Brick Development Association. Published by Arnold in 1997. ISBN: 0340676434

The first 14 pages cover the history of bricks in UK, from Roman bricks to 20th Century bricks. The next two chapters on design and site practices are of most interest to practitioners, while Chapter 4 on weathering provides lots of useful information about the causes and effects of damage to bricks. Chapter 5, Brick Manufacture is a brief, but useful description of how clay, calcium silicate bricks, and concrete blocks are made.

However, the 73 colour plates were a joy to look at, as they included so many wonderful brick and mortar patterns, and colours, in buildings. Examples of patterned paving are also included. My favourites are plate 20: Atlantic House, Wardour Street, London – featuring blue glazed brick contrasting with white brick buildings either side, and plate 52: water pumping station, Isle of Dogs, London, which is such a playful design for something so mundane as a pumping station!

The final sections are a Glossary, References and further reading, and an Index. Several books I have already reviewed feature in the further reading section.

The second book was published much later, it is 'Brick: a world history' by James W.P. Campbell, with photographs by Will Pryce. Published by Thames & Hudson, 2003, reprinted in 2004. ISBN: 0500341958.

This is a real coffee table book, weighing over 2kg, so not easy to read. The author is described as the Fellow in Architecture and History of Art at Queens' College, Cambridge and Director of Conservation with Finch Forman Architects, London. The size and weight problem aside, it is a lovely book visually, with over 600 illustrations, the majority in colour. The chapters cover specific time periods, such as Chapter 1: Ancient Civilisations 10,000 – 500BC, and, Chapter 3: The Medieval World 1000 – 1450. While the text is interesting, the illustrations really illuminate the text, so the reader becomes totally engrossed. As the illustrations are largely embedded in the text, it is easy to read text and refer to pictures together.

This is an historical account of how bricks have been used by architects of every period, a survey of brickmaking and bricklaying, and an essay in architectural and cultural history. From bricks in Ancient Egypt and Mesopotamia to their use by modern architects, this book shows the incredible importance and versatility of bricks and brickwork. The illustrations feature viaducts, cathedrals, country houses, mosques, temples, tunnels, and bridges.

Part of the last chapter is titled 'Conservation of brick and the heritage industry', accompanied by photos taken at Bulmer Brickworks, Suffolk. The lovely beehive kiln at Bulmer is featured in the section on kilns too.

There is a glossary, then a bibliographical essay that features the sources used in writing each chapter of the book, then a small index. Once again, I noted several titles that have featured in Brickbats reviews in the credits.

Just after I decided to review this book, the Brick Development Association donated a collection of photographs to the museum. As I unpacked the pictures, I recognised them as being from this book! On enquiry, I found that BDA had hosted the book launch. Now you too can admire the pictures as they form a new exhibition in the upstairs gallery at The Brickworks Museum.

Judy Bevis, Volunteer Librarian

Great Café News

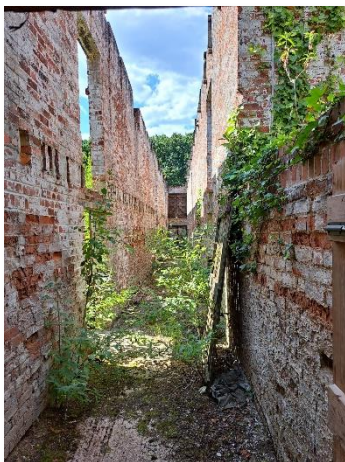
The Brickyard Café is now open 5 days a week, Wednesday to Sunday, between 10am and 4pm. Good news for any dog walkers, cycling groups, walkers and anyone that just love coffee and cake! Free parking makes the Brickyard Café a good place for meeting up with friends for morning coffee, a light lunch, or afternoon tea and cake. The menu includes breakfast, burgers, bakery, toasties, baguettes and jacket potatoes, so lots to choose from.

Edwin Course/Pam Moore Industrial Heritage Library

The museum is home to the book collections of these two noted industrial archaeology practitioners. The long term objective of the donors was for the the collections to bea Library of Industrial heritage. Sue and Daniel are organising and cataloguing the books, but are hampered by a lack of shelving for the whole collection. It is hoped that some wood left by the failed wood Recycling Project can be used to make enough shelving to house the books of this library that remain in boxes.

All we need now are people that can build the shelving!

Picture Gallery



Before and after:

The corridor between sheds 1 and 2



Houses under construction:

Photograph Acknowledgements:

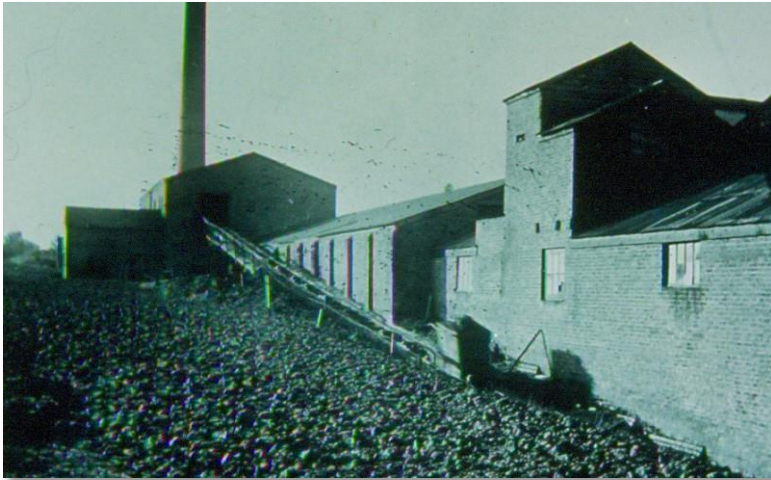
Page 1: Carlyne Haynes
 King's Award – Keith Aldis
 Downton construction – Nigel Bryant
 Stevenson's Rocket – Bob Palmer
 Page 13: Sheds 1 & 2 before and after – Sue Broomfield

Orchids, BBCo brick, Scotch kiln, memorial garden, and houses
 by Official Photographer for Brickbats



CONSERVATION WORK ON SKIP WAGONS

Prior to the introduction of the aerial ropeway at Bursledon Brickworks clay was hauled from the pits up



inclined planes to the top mills of the brickmaking machines, for example at the south plant:

Currently our workshop engineers think that the wagons used at the south plant would have been side tipping as this would have facilitated easy tipping alongside the top mill.

At the northern plant we have documentary evidence for end tipping wagons being in use. The railway in this case ran up to the position of the subsequent aerial ropeway and into the top mill between the two extrusion ends.

The workshop team have been carrying out conservation works on some of these wagons so that they can be exhibited, with

interpretation, in due course. The wagons have had loose scale and rust removed and a protective coating applied.

The side tipping wagon in the workshop after cleaning and before application of the protective coating



And back on the rails afterwards.

Currently an end tipping wagon is also in preparation:



The skip has been conserved and a separate cradle is in the process of adjustment to fit. This example is being prepared from parts as no fully intact piece could be found.

There are other kinds of brick wagons onsite and it is hoped to conserve these for inclusion in a future display, for example this wagon from Downton Brickworks:



Our workshop team spend many hours on these projects, drawing on years of accumulated skill and experience. Without them such work would not be possible.

John Bevis

© All rights reserved. No part of this publication may be reproduced, stored in a retrieval system, or transmitted, in any form or by any means, electronic, mechanical, photocopying, recording or otherwise, without the permission of the editor and contributors.

The Brickworks Museum
Swanwick Lane, Swanwick, Southampton, SO31 7HB
www.thebrickworksmuseum.org



**BETTER
WITH
BRICK**

CHOOSE
BETTER CHOOSE
CLAY BRICK

Stronger, more sustainable
and more beautiful than ever.

Explore the benefits of clay brick | brick.org.uk/better-with-brick

**BRICK
DEVELOPMENT
ASSOCIATION**

Brickbats is kindly sponsored by the Brick Development Association